



**NOTICE OF CONSIDERATION OF
SITE PLAN AND SPECIAL LAND USE REQUEST CONCERNING A RESTAURANT
WITH A CLASS C LIQUOR LICENSE**

**SIDECAR SLIDER BAR
1952 SOUTH TELEGRAPH ROAD
(SIDWELL NO: 19-05-154-020)**

PLEASE TAKE NOTICE THAT a PUBLIC HEARING will be held by the Board of Trustees of the Charter Township of Bloomfield, Oakland County, Michigan on **MONDAY, APRIL 14, 2025, at 7:00 p.m.** in the Community Television Building studio, 4190 Dublin Drive, Bloomfield Hills, MI 48302. The auditorium at the Township Hall will be closed for renovations. At the hearing, the Board will consider the request which includes extended hours of operation to remain open until 12:00 a.m. Monday-Sunday, and a Class C Liquor License. The restaurant will be located within the Bloomfield Marketplace Shopping Center, north of Square Lake Road, and on the west side of Telegraph Road.



Comments regarding this site plan may be provided at the public meeting, submitted via email to publiccomment@bloomfieldtp.org or by contacting the Planning Division at (248) 433-7795. Materials for the Board meeting will be made available to the public on Bloomfield Township's [Documents of Demand webpage](#) by the close of business on Thursday, April 10, 2025. Meetings are broadcasted live through [Bloomfield Community Television](#) on Comcast's channel 15 for residents of Bloomfield Township. The links and Quick Response ("QR") codes provided above can be utilized to view the meeting's materials and proceedings.

**MARTIN C. BROOK
BLOOMFIELD TOWNSHIP CLERK**

NOTE: The Charter Township of Bloomfield will provide necessary, reasonable auxiliary aids and services at all meetings to individuals with disabilities. All such requests must be made at least five days prior to said meeting. Individuals with disabilities requiring auxiliary aids or services should contact Bloomfield Township by writing or calling the following: Letter • Bloomfield Township Clerk's Office, 4200 Telegraph Road, Bloomfield Hills, MI 48302. Email • clerk@bloomfieldtp.org Phone • 248-433-7702.

Post: 03-27-2025

Publish: 3-30-2025

U.S. Mail: 3-27-2025

Bloomfield Township
1952 South Telegraph Road
19-05-154-020



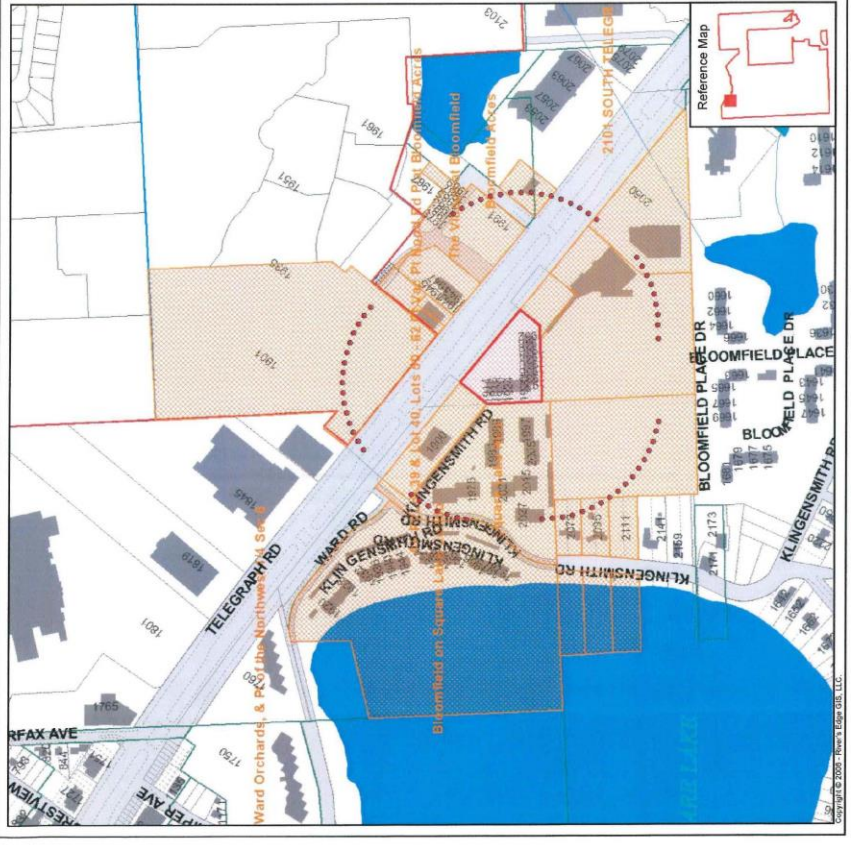
MAP LEGEND:

- LOT LINES
- MARSH - SWAMP
- ROAD EDGE - PLANIMETRICS - 2000
- TOWNSHIP LIMITS
- SUB DIVISIONS
- RIVERS - STREAMS
- OPEN WATER
- BUILDING OUTLINE
- PORT/AC AGREEMENT
- PARCELLAYER
- NO THROUGH ROADS
- RIGHT OF WAY



Map Scale: 1 inch = 479 feet
 Map Date: 3/26/2025
 Data Date: March 12, 2025
 Sources: Bloomfield Township, Oakland County GIS
 Utility, River's Edge GIS, LLC.

Disclaimer:
 The information provided here is intended for reference purposes only. It is not a legally recorded map or survey and is not intended to be used as such. The Township assumes no responsibility for errors or omissions from the use of the data.



Copyright © 2025 - River's Edge GIS, LLC.