

WHAT IS RCOC?

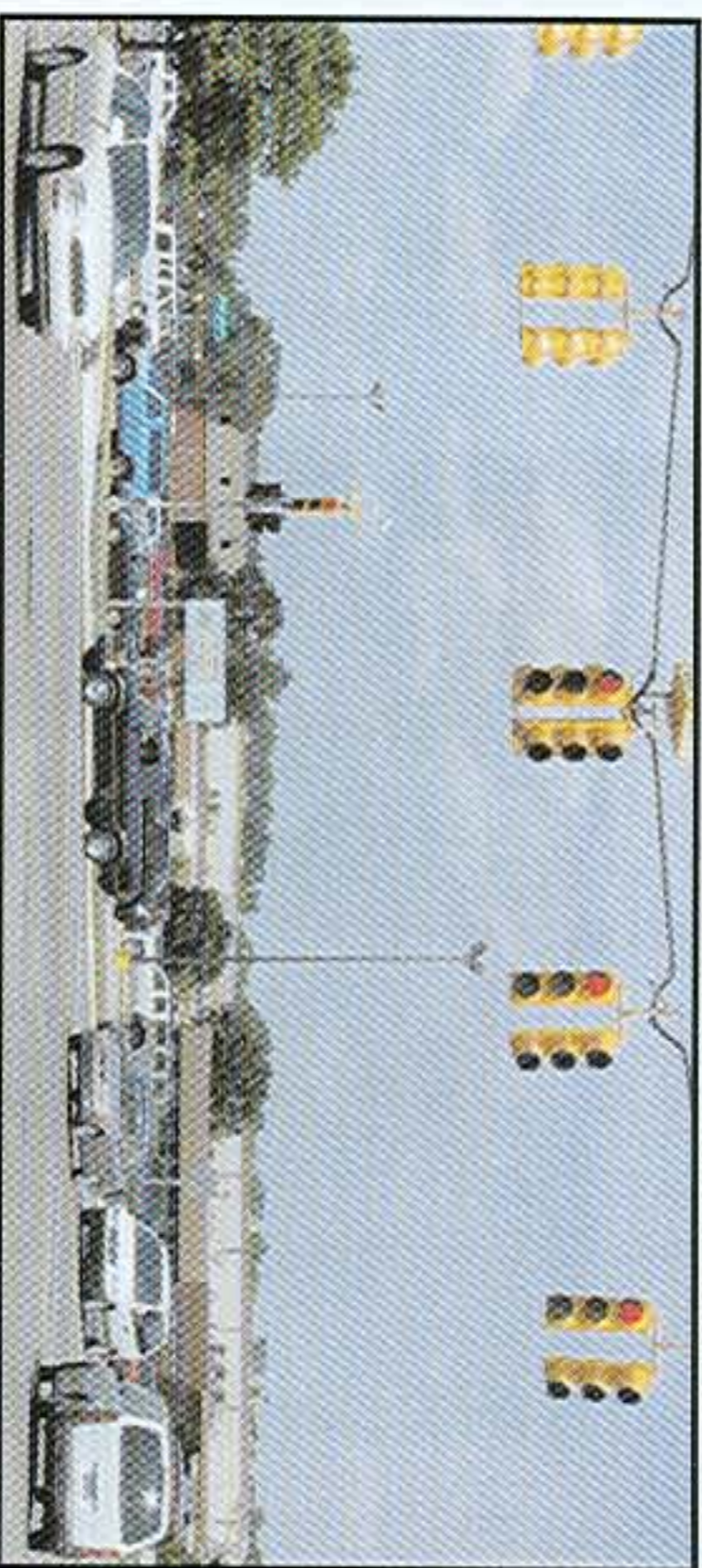
The Road Commission for Oakland County is Michigan's largest county road commission, with a 2,700-mile road system (including nearly 800 miles of gravel roads). Only the state highway system is larger.

RCOC also maintains:

- ◆ Approximately 80 bridges,
- ◆ Approximately 1,200 traffic signals,
- ◆ Approximately 120,000 traffic signs and
- ◆ More than 230 miles of state highway.

SAFETY FIRST

As a matter of policy, major road improvement projects are conducted by the Road Commission based on a safety ranking system. At RCOC "Safety First" is more than a motto.



RCOC:

- ✓ Is separate from county general government and does not receive any revenue from property taxes
- ✓ Receives the majority of its funding from the state-collected gas tax
- ✓ Has congested roads due to the tremendous growth in the county
- ✓ Receives no direct revenue from growth and development
- ✓ Pays as much as \$1.5 million to pave a mile of gravel road
- ✓ Pays approx. \$6 million to widen one mile of road from two lanes to five
- ✓ Is located in a state with a gas tax below the national average
- ✓ Is located in a state that ranks in the bottom seven states in per capita road funding

ROAD COMMISSION
for OAKLAND COUNTY
31001 Lahser Road • Beverly Hills • MI 48025

BOARD OF ROAD COMMISSIONERS

LARRY P. CRAKE

RUDY D. LOZANO

RICHARD G. SKARRITT

Brent O. Bair
Managing Director

Dennis Kolar, P.E.
Deputy Managing Director
County Highway Engineer

RCOC MISSION STATEMENT

RCOC strives to provide the public with leadership in:

- Safe and convenient roads
- Sound financial management
- Responsive and dependable service
- Respect for the environment
- Sensitivity to community concerns

HAVE A QUESTION FOR THE ROAD COMMISSION?

CALL OR WRITE!

DEPARTMENT OF CITIZEN SERVICES

2420 PONTIAC LAKE ROAD

WATERFORD, MI 48328

TOLL-FREE: (877) 858-4804

TDD: (248) 858-8005

OR, visit RCOC online at

www.rcocweb.org

ROAD COMMISSION
for OAKLAND COUNTY

FLASHING- YELLOW- ARROW- LEFT-TURN SIGNALS

