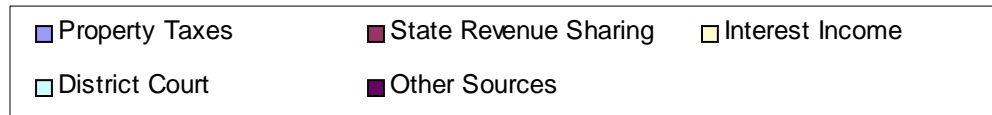
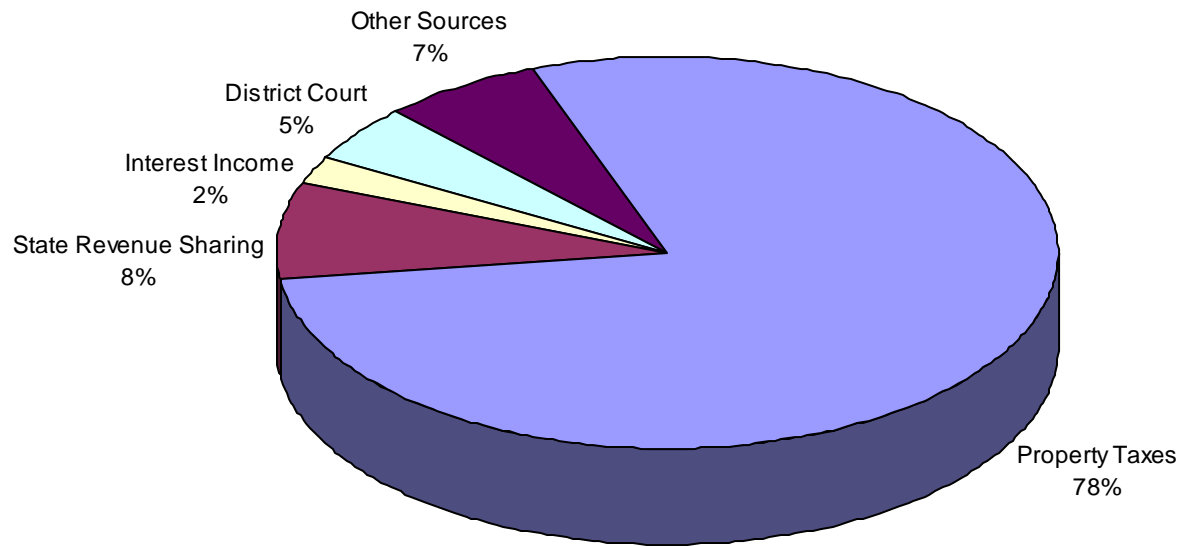
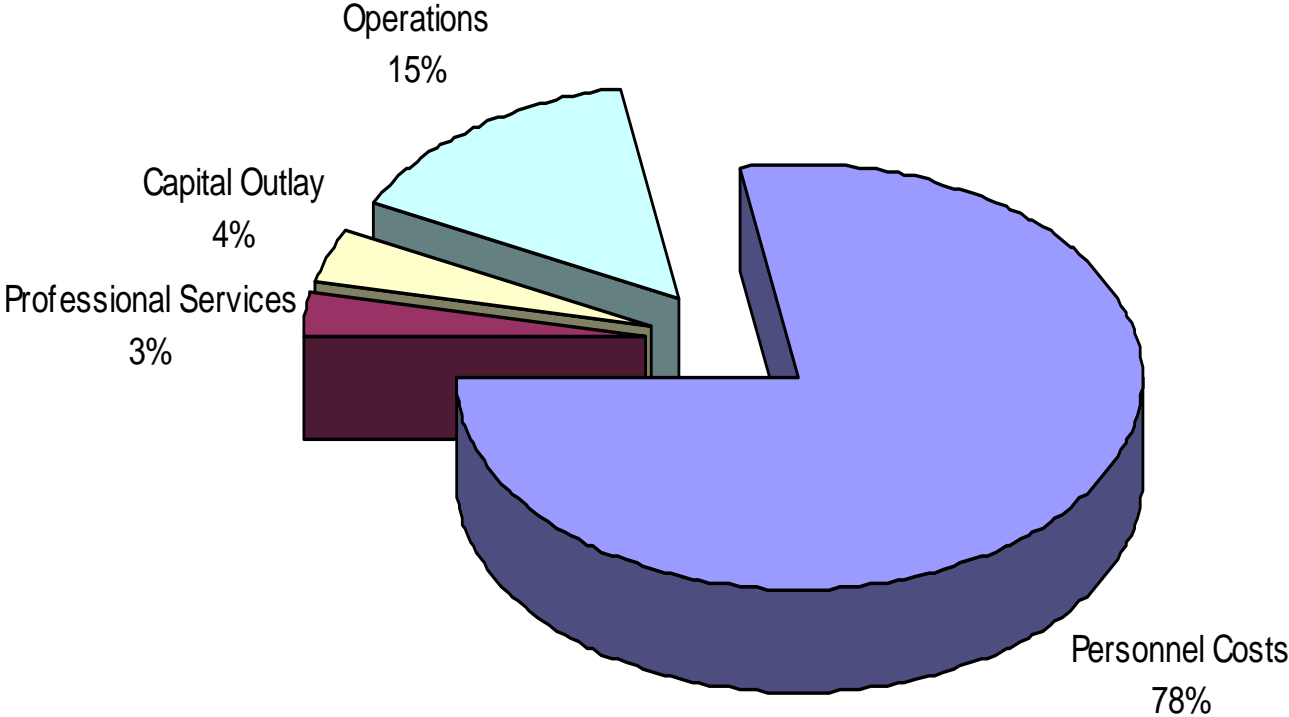


OPERATING FUNDS REVENUES BY SOURCE 2009 - 10 BUDGET
(General Fund, Road Fund, Public Safety Fund)



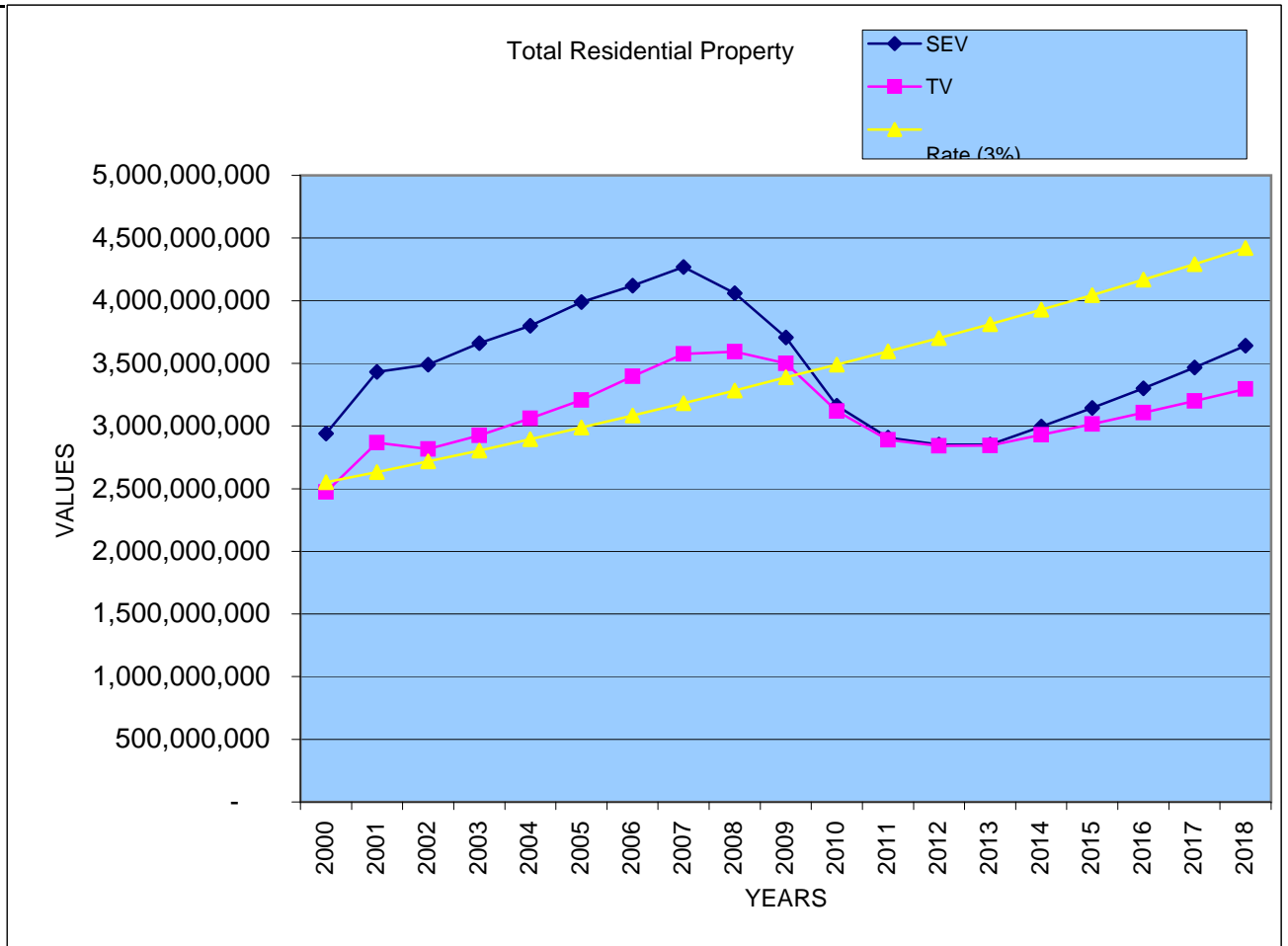
OPERATING FUNDS EXPENDITURES 2009 - 10 BUDGET

(General Fund, Road Fund, Public Safety Fund)

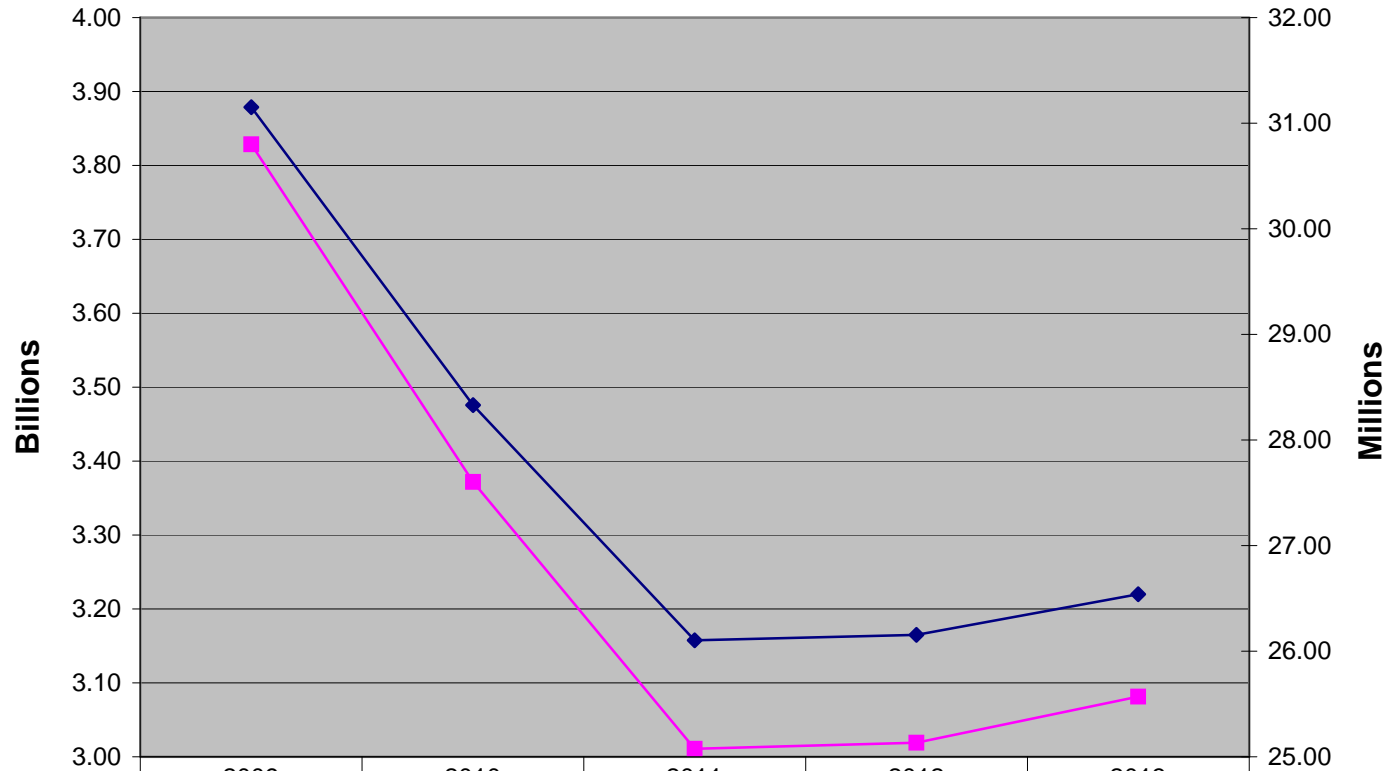


Total Residential Township 2009-2018 with Inflation Rate

YEAR	SEV	TV	Rate (3%)
2000	2,939,646,320	2,472,571,228	2,551,693,507
2001	3,431,204,660	2,868,084,628	2,633,347,699
2002	3,489,773,080	2,815,561,268	2,717,614,825
2003	3,660,409,480	2,923,690,008	2,804,578,500
2004	3,800,885,260	3,060,287,528	2,894,325,012
2005	3,987,677,690	3,207,208,070	2,986,943,412
2006	4,119,178,500	3,395,855,670	3,082,525,601
2007	4,268,611,590	3,574,219,310	3,181,166,420
2008	4,058,387,965	3,592,108,420	3,282,963,746
2009	3,706,395,940	3,498,607,800	3,388,018,586
2010	3,160,910,860	3,119,098,910	3,489,659,143
2011	2,908,038,350	2,888,479,610	3,594,348,918
2012	2,852,071,670	2,842,001,960	3,702,179,385
2013	2,852,071,676	2,843,540,383	3,813,244,767
2014	2,994,675,260	2,928,846,594	3,927,642,110
2015	3,144,409,023	3,016,711,991	4,045,471,373
2016	3,301,629,474	3,107,213,350	4,166,835,514
2017	3,466,710,947	3,200,429,751	4,291,840,579
2018	3,640,046,494	3,296,442,643	4,420,595,796



Projection of Taxable Value vs. Tax Revenue



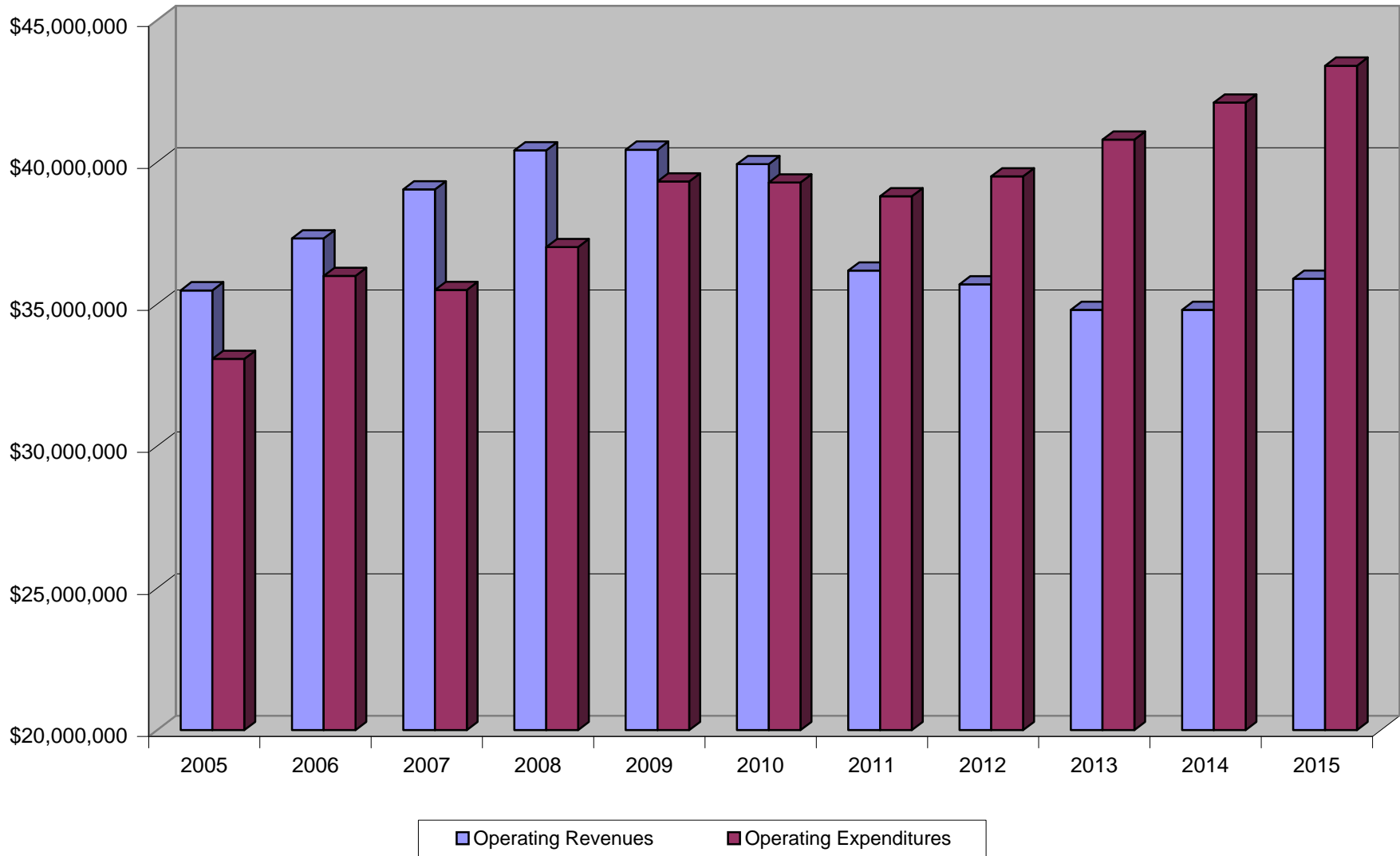
	2009	2010	2011	2012	2013
◆ Projected Taxable Value	\$3,878,712,490	\$3,475,888,000	\$3,157,741,000	\$3,165,000,000	\$3,220,000,000
■ Projected Tax Revenue	30,800,468	27,601,679	25,075,306	25,132,949	25,569,698

Year

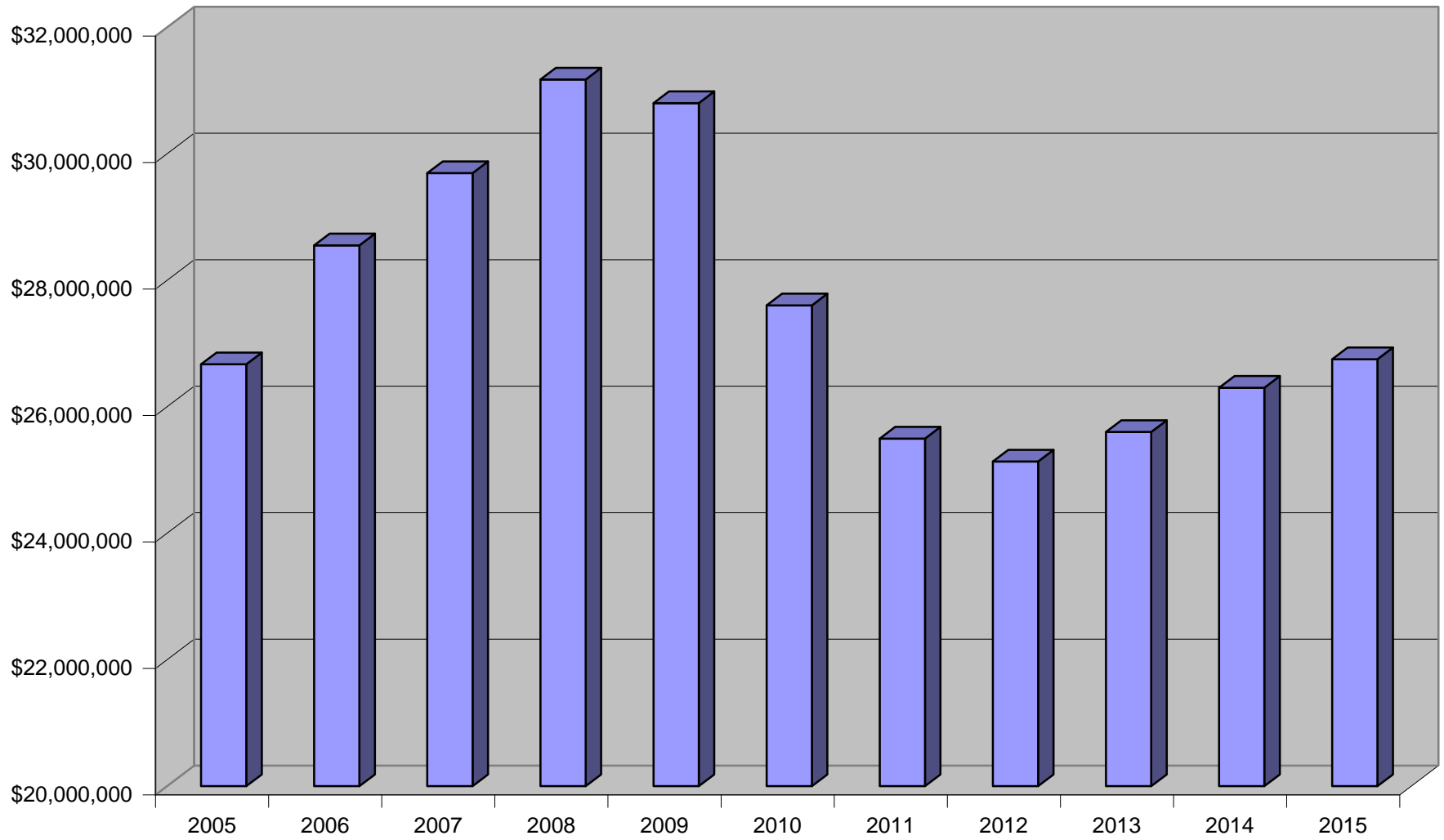
Bloomfield Township Major Operating Funds General, Road, Public Safety

	2009	2010	2011	2012	2013
Total Taxable Value	\$ 3,878,712,490	\$ 3,475,888,000	\$ 3,157,741,000	\$ 3,165,000,000	\$3,220,000,000
Millage Rate	<u>0.0079409</u>	<u>0.0079409</u>	<u>0.0079409</u>	<u>0.0079409</u>	<u>0.0079409</u>
Property Tax Revenue	\$30,800,468	\$27,601,679	\$25,075,306	\$25,132,949	\$25,569,698

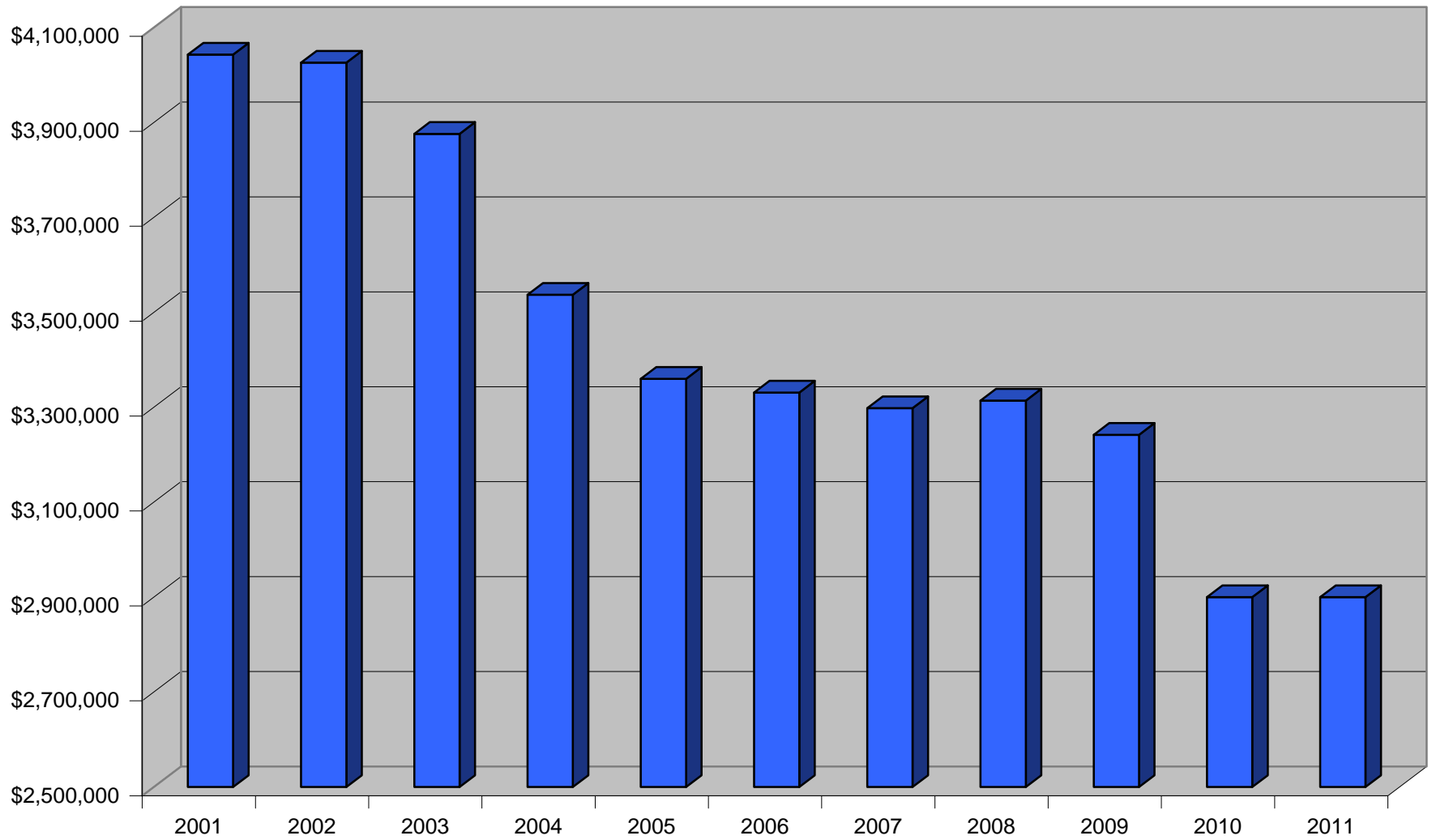
PROJECTED OPERATING REVENUES AND EXPENDITURES



PROPERTY TAX REVENUES

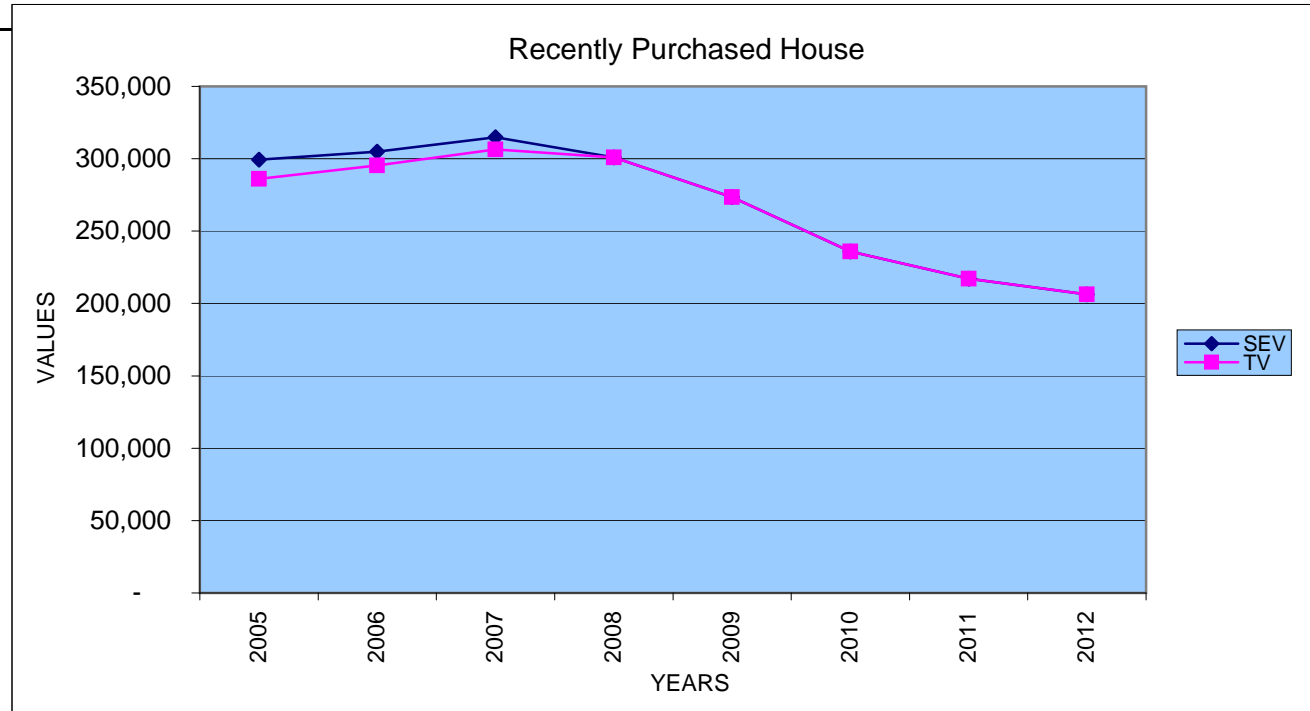


STATE REVENUE SHARING



YEAR	SEV	TV
2005	299,330	286,050
2006	304,890	295,480
2007	314,910	306,410
2008	300,900	300,900
2009	273,470	273,470
2010	235,920	235,920
2011	217,050	217,050
2012	206,200	206,200

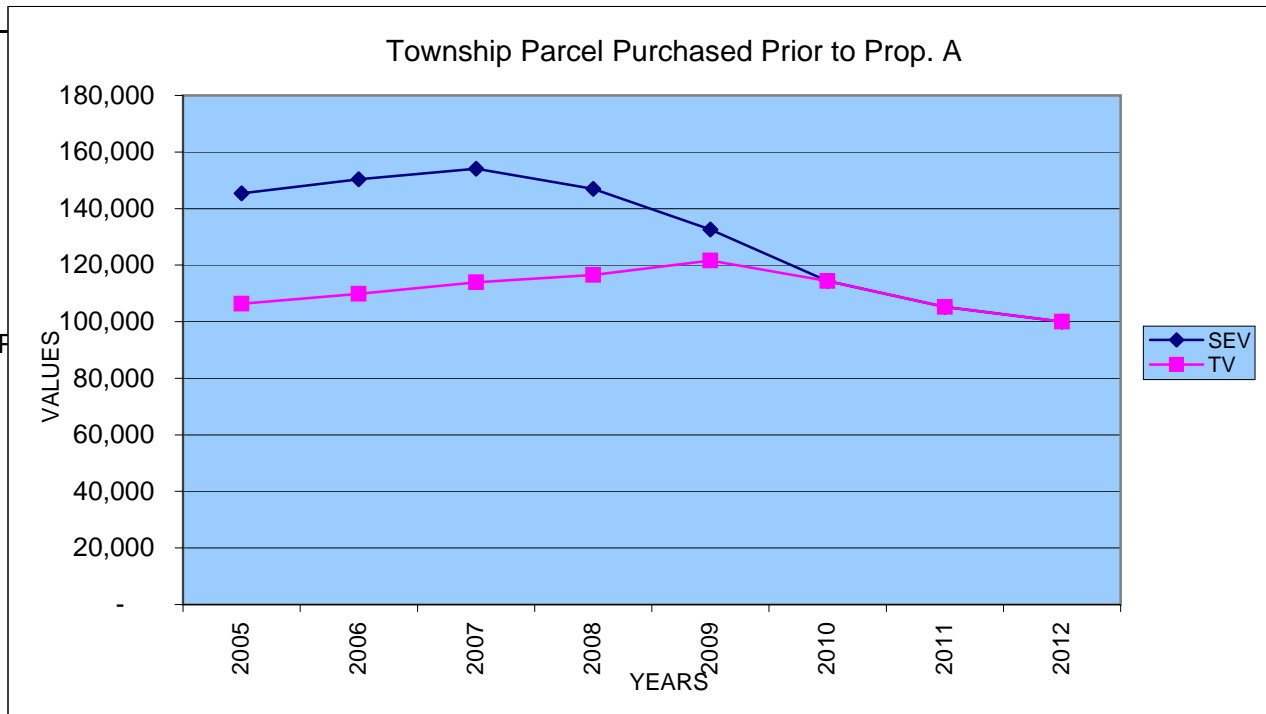
YEAR	TAXES
2005	10,721
2006	10,747
2007	11,254
2008	10,919
2009	9,988
2010	8,618
2011	7,928
2012	7,532



YEAR	SEV	TV
2005	145,400	106,330
2006	150,330	109,830
2007	154,050	113,890
2008	147,010	116,500
2009	132,600	121,620
2010	114,390	114,390
2011	105,240	105,240
2012	99,980	99,980

Township Parcel Purchased Prior to P

YEAR	TAXES
2005	4,191.18
2006	4,243.64
2007	4,381.35
2008	4,444.71
2009	4,721.00
2010	4,441.00
2011	4,086.00
2012	3,882.00



BLOOMFIELD TOWNSHIP PROPERTY TAX RATES 2008

	<u>Original Levy</u>	2008 <u>Max. Allowed</u>	Property Taxes <u>2008-09 Fiscal Year</u>	<u>Expiration Date</u>
<u>MAJOR OPERATING MILLAGES</u>				
General Allocated	1.4100	0.9947 \$	3,927,333.00	NA
Road Department	1.0000	0.7169	2,830,500.00	2016
Public Safety	2.5000	2.3931	9,448,500.00	2012
Public Safety	2.8000	2.0085	7,930,100.00	2016
Public Safety	1.2500	1.1336	4,475,700.00	2013
Public Safety	1.0000	<u>0.6941</u>	<u>2,740,500.00</u>	2015
		7.9409 \$	31,352,633.00	
<u>OTHER OPERATING MILLAGES</u>				
Library Operating	2.0000	1.4590 \$	5,760,500.00	NONE
Senior Sevices	0.2500	0.2439	962,900.00	2013
Safety Paths	0.5300	<u>0.4839</u>	<u>1,910,500.00</u>	2013
		2.1868 \$	8,633,900.00	
<u>DEBT MILLAGES</u>				
Township Campus	NA	0.3635 \$	1,435,200.00	NA
Library Renovation	NA	0.3800	1,500,300.00	NA
Drains at Large	NA	<u>0.2500</u>	<u>987,100.00</u>	NA
		0.9935 \$	3,922,600.00	
Grand Total All Millages		11.1212 \$	43,909,133.00	